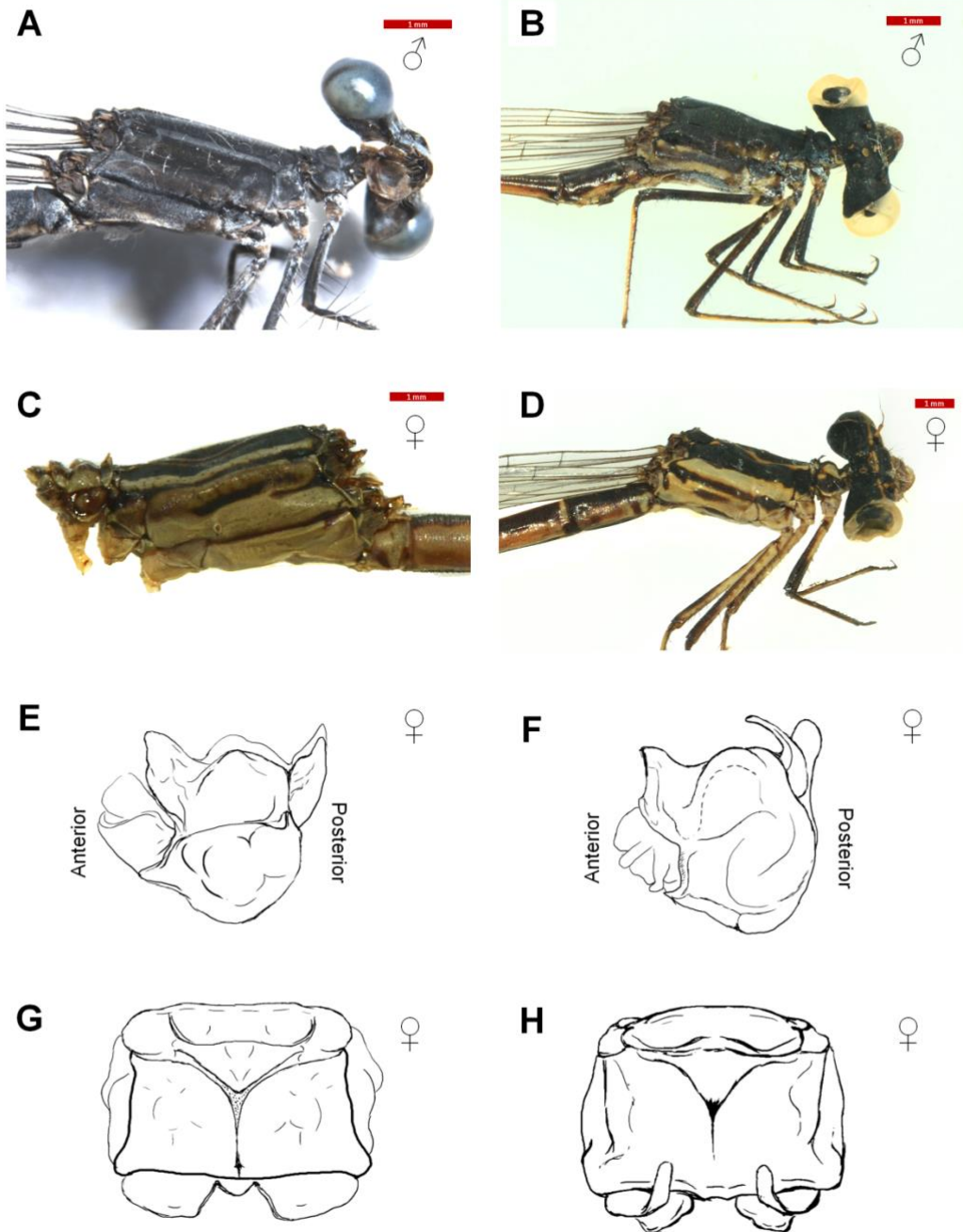


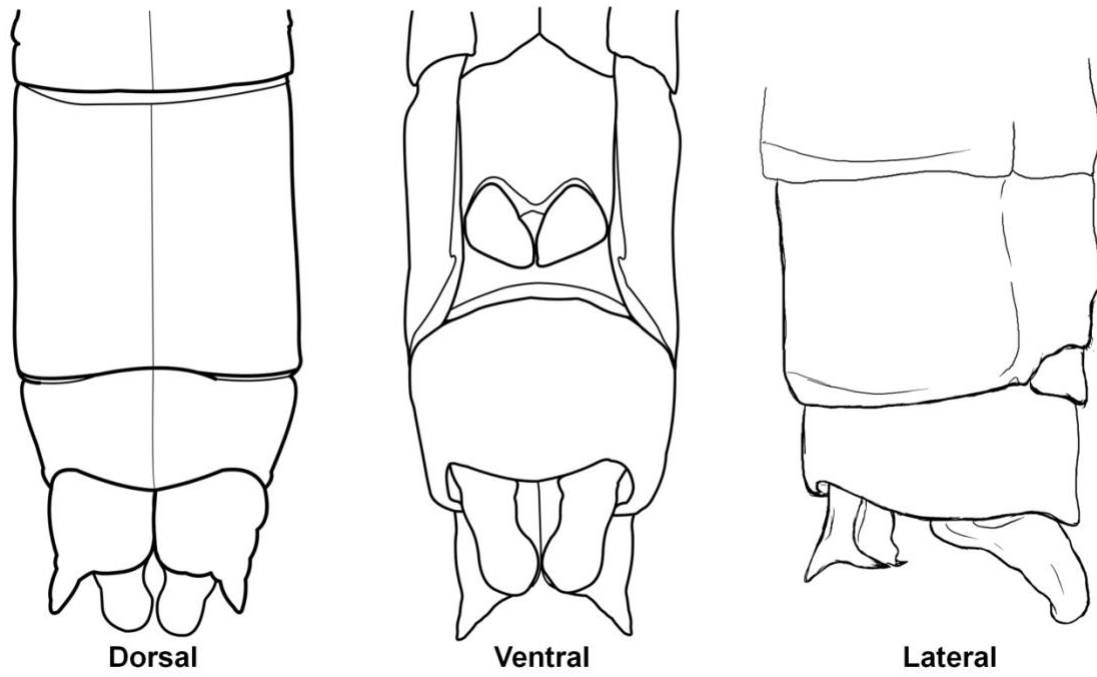
Supplementary Figure 1. The distribution of the Indian *Elatoneura* species as per IUCN (2015). Four *Elatoneura* species, all endemic to India, inhabit Peninsular India.

Elattoneura nigerrima

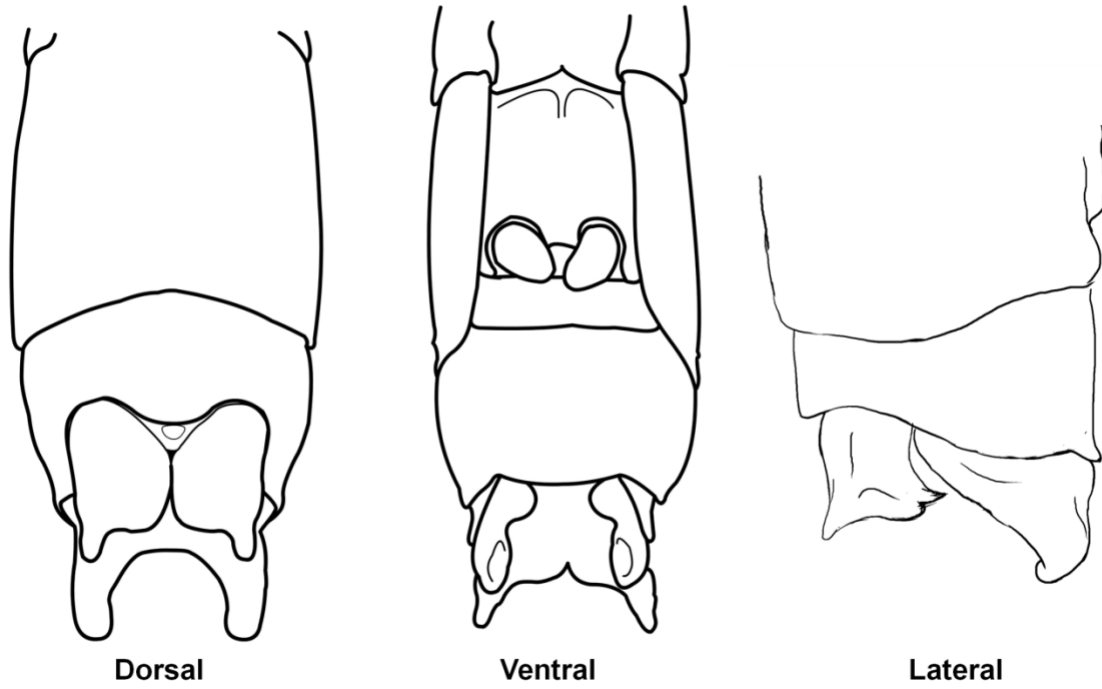
Elattoneura tetrica



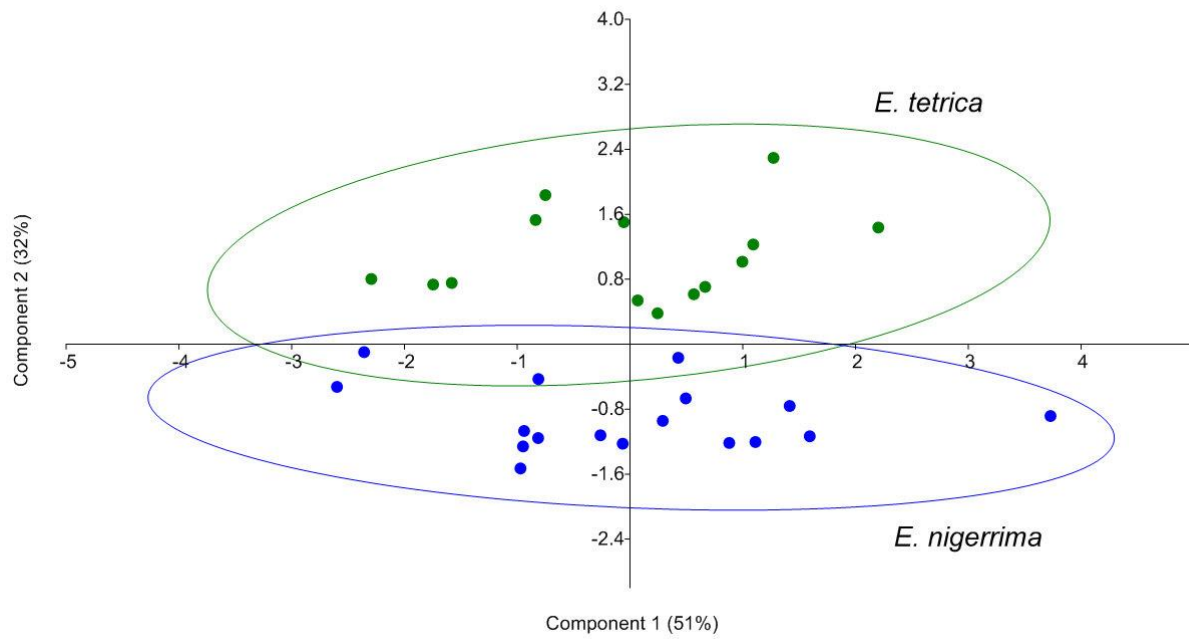
Supplementary Figure 2. Lateral view of thorax of *E. nigerrima* & *E. tetrica*. **A, B:** images of male specimens; **C, D:** images of female specimens; **E, F:** drawings of the lateral view of prothorax of female specimens; **G, H:** drawings of the dorsal view of prothorax of female specimens. Please note, drawings are not to scale.



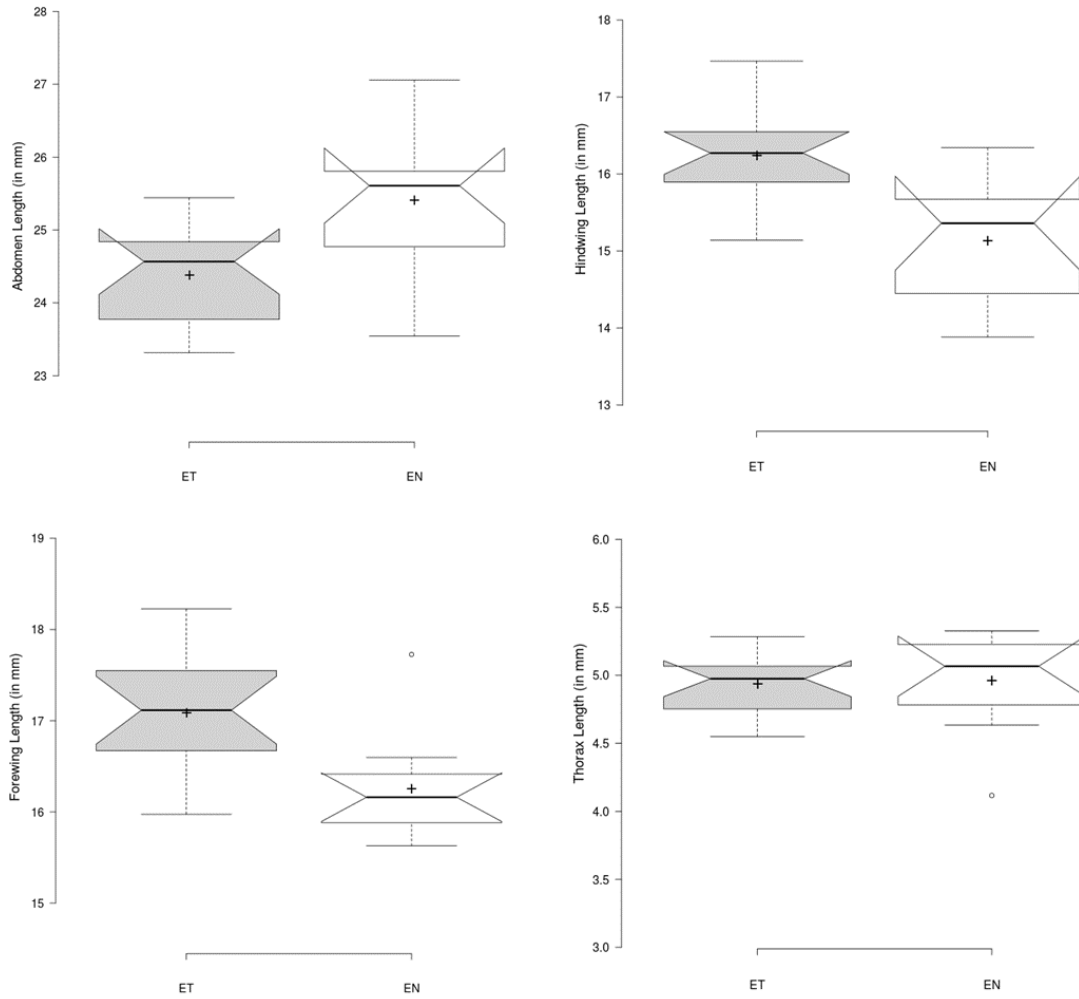
Supplementary Figure 3. Illustrations of anal appendages of *E. nigerrima* male specimen. Illustration courtesy: Vignesh Shinde & P. Dawn.



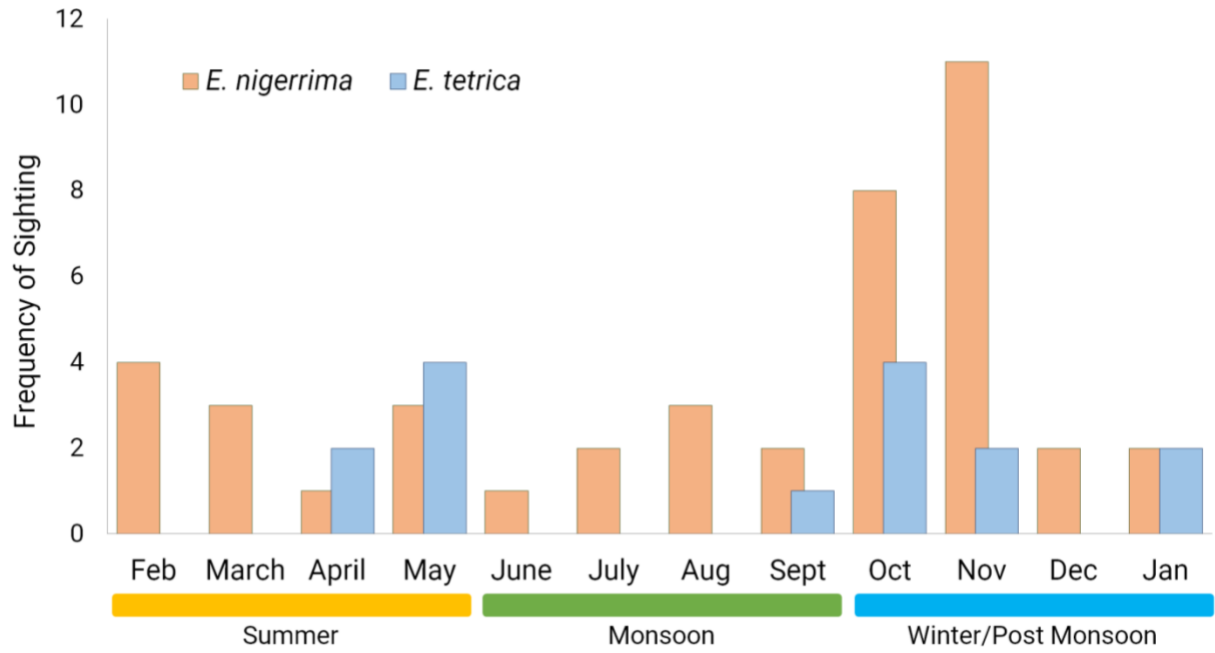
Supplementary Figure 4. Illustrations of anal appendages of *E. tetrica* male specimen. Illustration courtesy: Vignesh Shinde & P. Dawn.



Supplementary Figure 5. Principal component analyses for several morphological traits of both *E. tetrica* (green circles) and *E. nigerrima* (blue circles).



Supplementary Figure 6. Box-plots showing differences in the abdomen, thorax, hind wing, fore wing lengths between *E. nigerrima* and *E. tetrica*.



Supplementary Figure 7. The temporality of *E. nigerrima* and *E. tetrica*. The Y-axis represents the frequency of sighting.